

**BRIDON**  
AMERICAN

*weather guard.*



WRIGHT TOOL

theCrosbygroup.  
INC.

**KNAACK**



**CASCO**  
COLUMBUS McKINNON

**HARRINGTON**  
HOISTS AND CRANES

 **GUNNEBO**  
Industries

**R&M**  
MATERIALS  
HANDLING  
INC.

**GrabIQ**

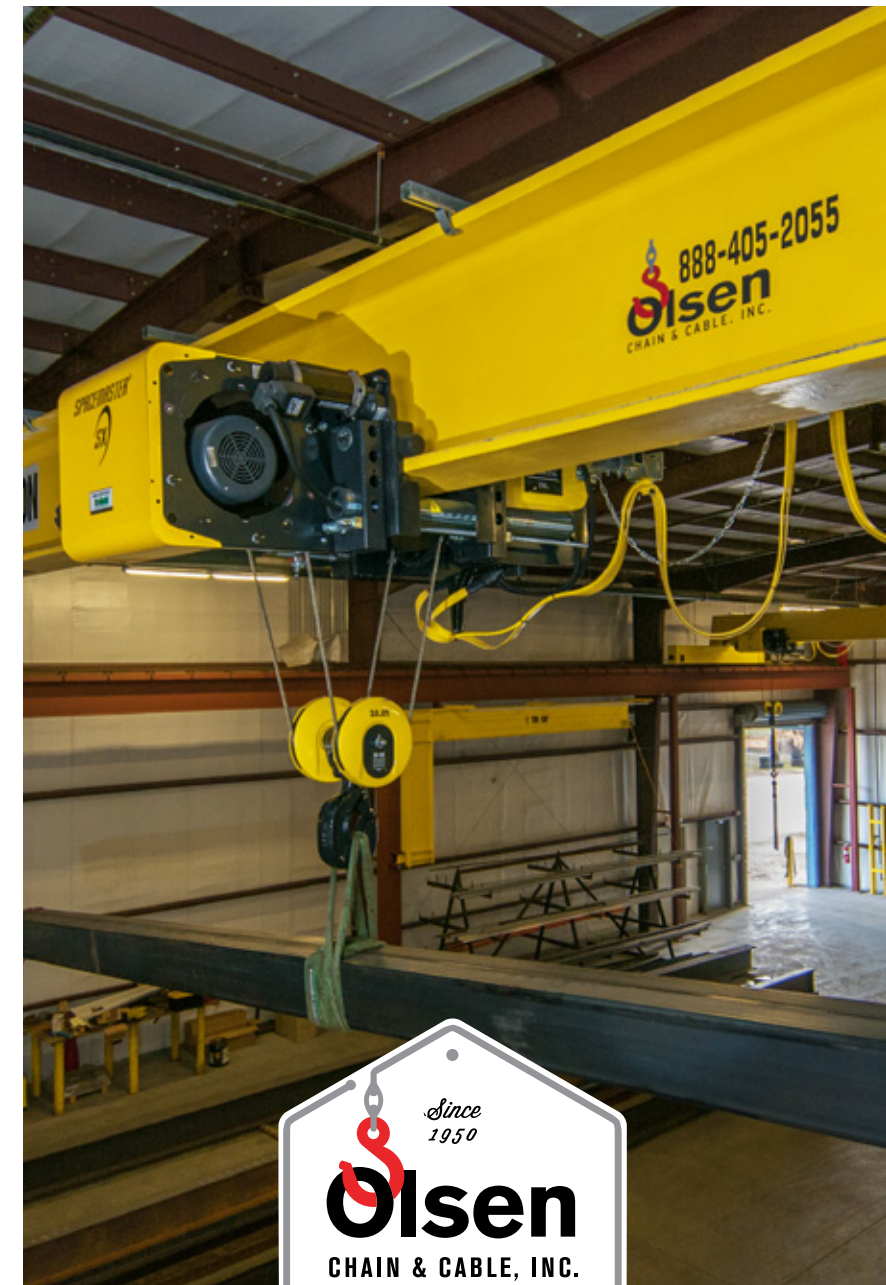
**GORBEL**  
A CLASS ABOVE

**KWS**  
INC.



<b>EDINA, MN</b> 7225 Washington Ave. S. Edina, MN 55439  PH 952.944.7678 TF 800.328.1906 FX 952.944.3899	<b>MOORHEAD, MN</b> 4133 32nd Ave. S. Moorhead, MN 56560  PH 218.236.7099 TF 800.328.1906 FX 218.236.7191	<b>BARTOW, FL</b> 1577 Centennial Blvd Bartow, FL 33830  PH 863.578.0349 TF 888.405.2055 FX 863.226.1597
---	---	--

1702A



800.328.1906 / SALES@OLSENCHAIN.COM

OLSENCHAIN.COM

# CRANES & HOISTS

WE'LL OUTFIT YOUR WORKSPACE WITH THE MOST RELIABLE HEAVY LIFTING EQUIPMENT AVAILABLE ON THE MARKET.



## CRANES

To lift, rotate, and transport the heaviest of equipment and loads.

### Gantry and Mobile Gantry Cranes

Put in place over and around equipment so that you can get maximum leverage and load-bearing capacity.

### Jib Cranes

Jib Cranes can move materials up to 360 degrees, depending on their installation, around their central support structure. As you consider the right solution for your needs, talk to one of our experts and find the jib crane that will work best.

- Free Standing
- Wall Bracket
- Articulating
- Wall Cantilever
- Mast Type
- Enclosed Track

### Monorail Cranes

Ideal for movement of heavy items within restricted spaces. Some move in a straight line; others can be engineered to move items in various patterns.

### Workstation Cranes

Designed to meet the varied and demanding requirements of your workstation and your production line.



## HOISTS

Olsen Chain & Cable manufactures, sells, and services reliable hoists that stand up to even the most difficult tests of strength and durability.

### Electric Chain Hoists

Compatible with most any workstation and adjustable to your specific needs because of compact headroom, hook suspension, variable speeds and features.

### Wire Rope Hoists

Olsen Chain & Cable Wire Rope Hoists can lift varying weights and load types.

### Manual Chain Hoists

For when electricity is either unavailable or impractical, but you need a lifting solution.

### Lever Chain Hoists

Giving you the ability to lift equipment safely in a variety of workstation layouts and scenarios.

Our cranes & hoists come with the same standards of safety, reliability & service that you've come to expect from the Olsen Chain & Cable name since 1950.

Olsen Chain & Cable, Inc. has a full service department for all of your inspection, refurbish and follow-up needs.

**Annual Inspection Reminders.** We'll keep track of your inspection schedule so you can focus on the work at hand. Convenient email alerts, or a call if requested, will let you know when your equipment is due.

Visit [olsenchain.com/hoists-and-cranes](https://www.olsenchain.com/hoists-and-cranes) or call **800.328.1906** to learn more about Hoists & Cranes, Inspection Services & Refurbishment